

Printing Data

	Luff's Data		Tiffany's Data
	Printed	Delivered	?
5¢ (both types)*	143,690	135,560	55,560
10¢	400,490	350,460	215,600
25¢	46,450	35,20	31,488

* No data on distribution between plain border and solid

Rates

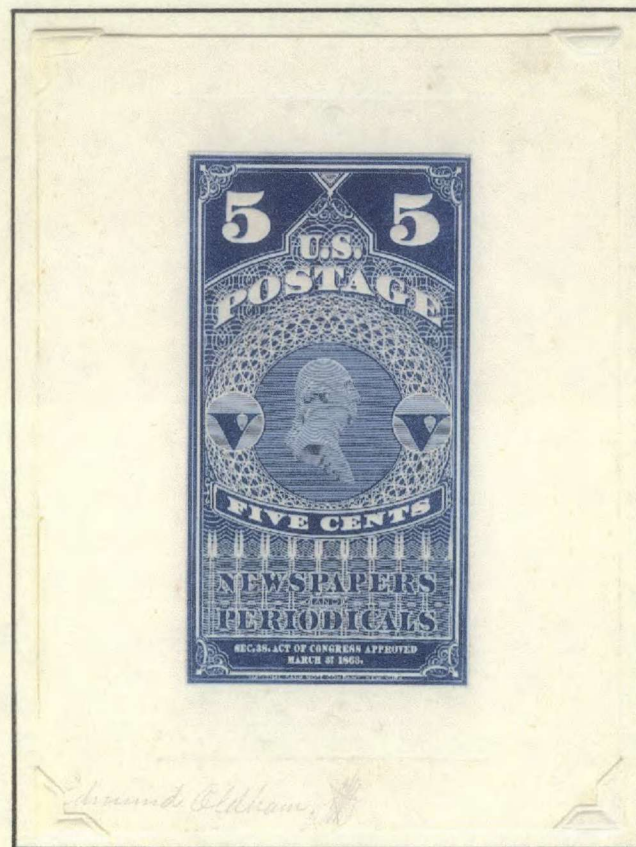
- Probably 5 cents/(2½ pounds) or fraction thereof
- No published rate schedule has ever been found
- No used copy on “cover” has ever been found to help

How Were They Used?

- Purchased from PO by the newspaper
- Put on packages of papers destined for a single city
- Delivered to route clerk
- Clerk canceled stamps with paintbrush (almost always)
- Delivered to newsagent

UNITED STATES - NEWSPAPER - 1865

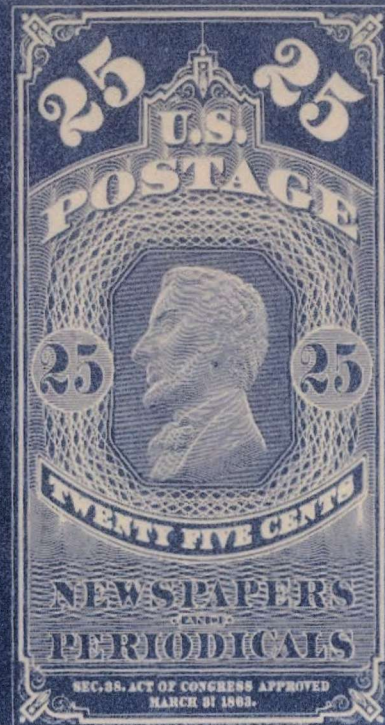
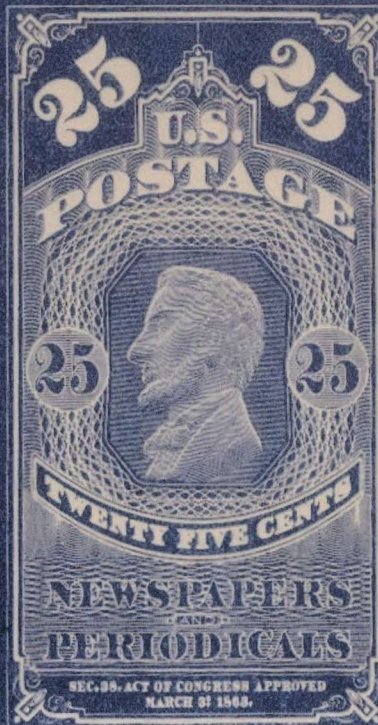
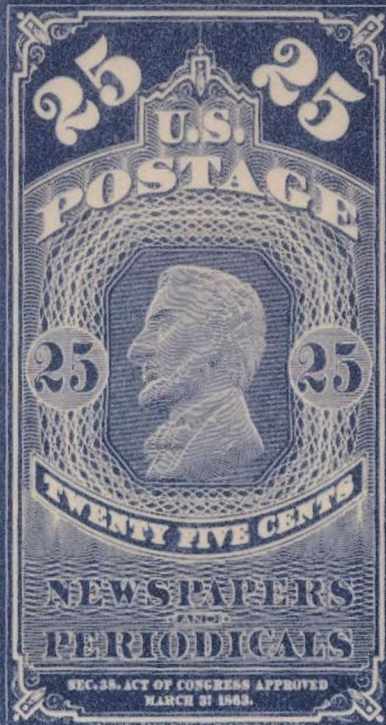
5 CENTS



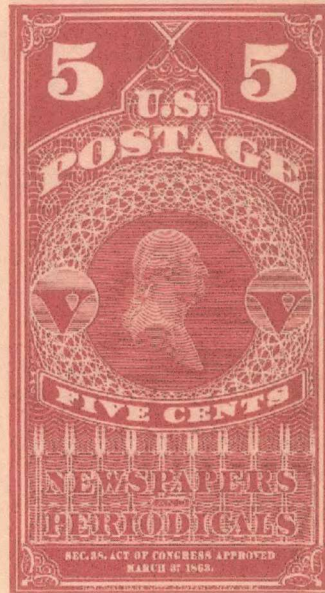
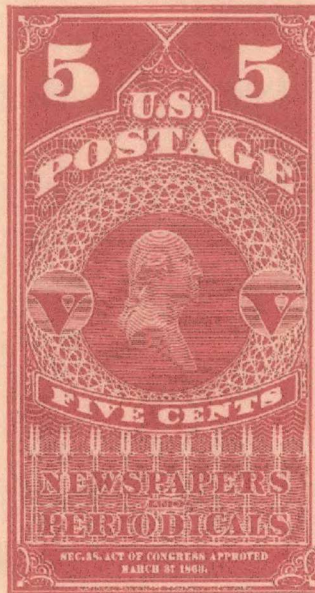
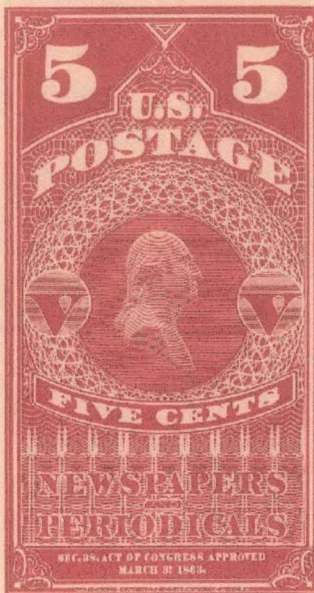
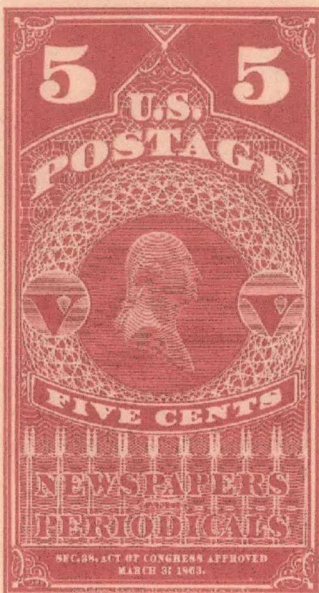
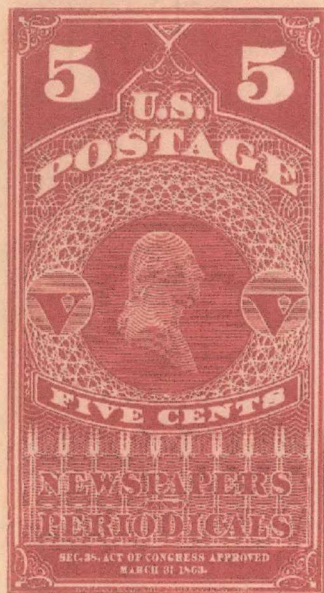
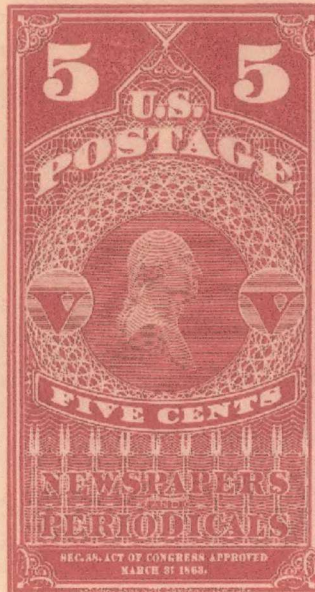
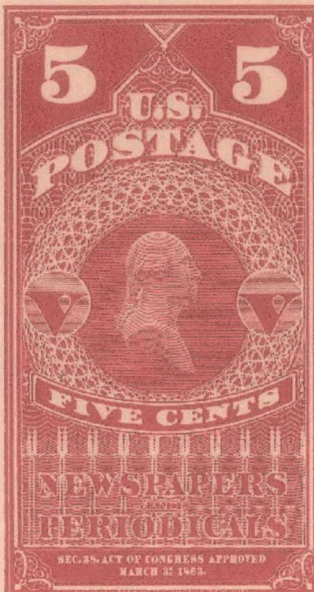
SIGNED BY ENGRAVER
EDMUND OLDHAM
APPROVED BY
JAMES MACDONOUGH

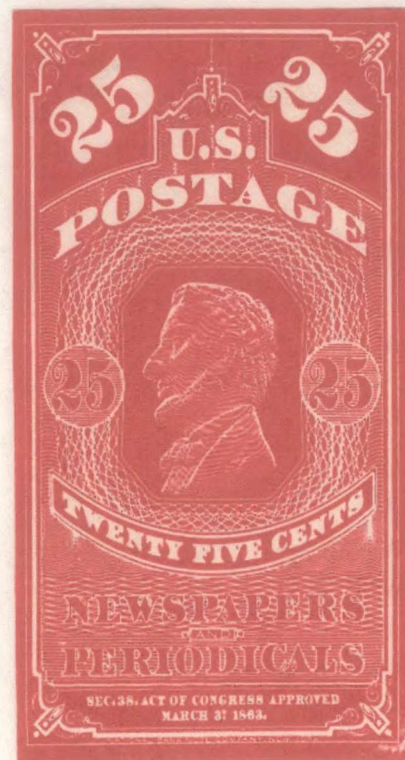
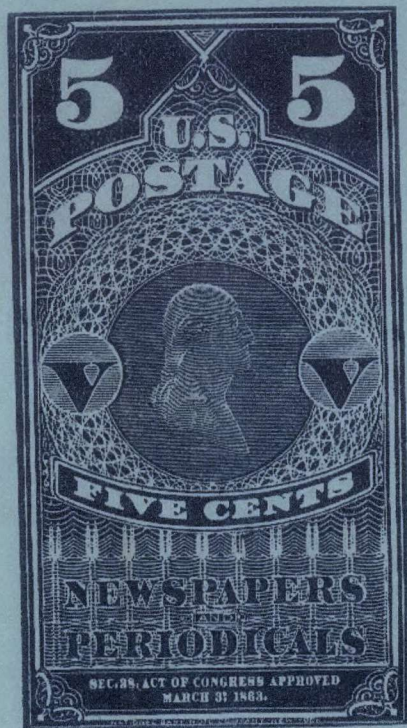
LARGE DIE

EX-1491 (PAID-000)



POSTAGE AND FEES PAID





Type I Specimens & ANZ MS Specimen

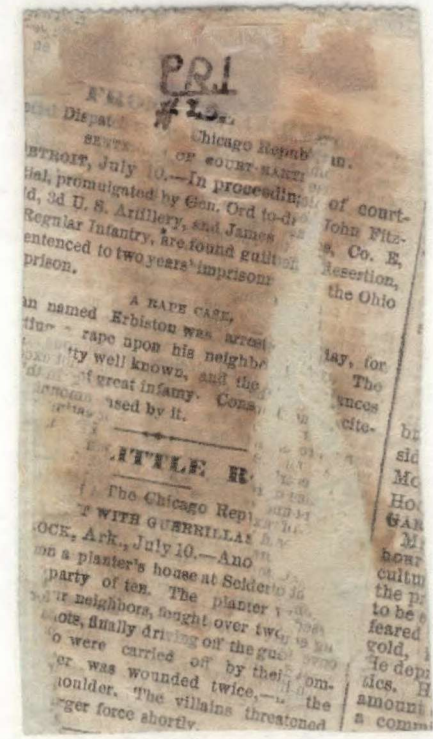




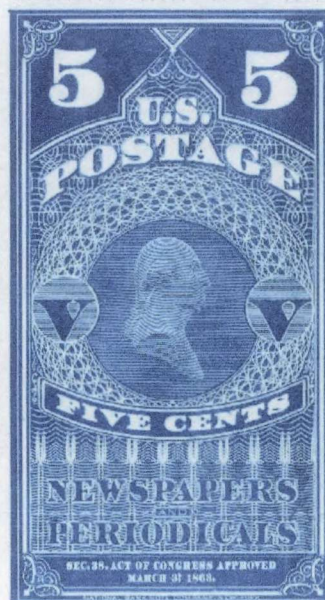
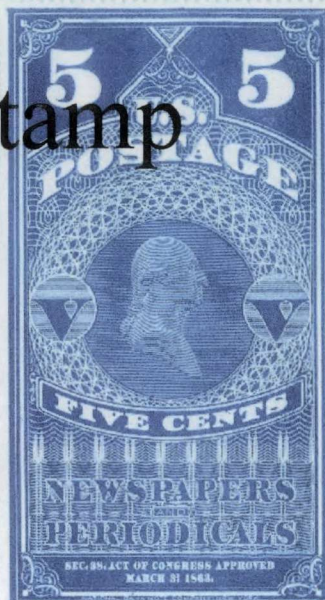
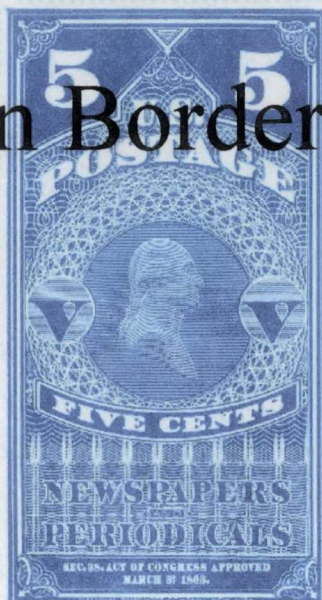
PR1 – 3 Used

- Extremely scarce
- “Fortunate that all the pieces are there”
Braceland
- My inventory
 - 5 cent solid border – 3
 - 5 cent white border – 2
 - 10 cent solid border – 5
 - 25 cent solid border – 2

PR 1 – 3 Used

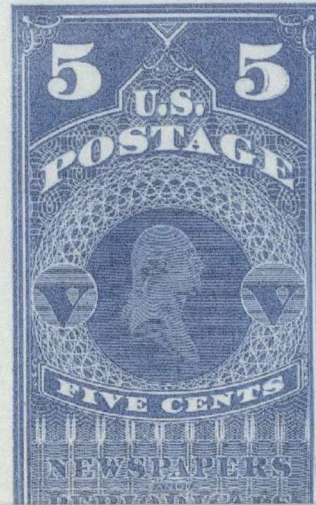
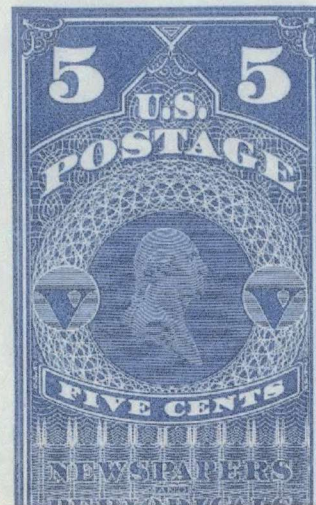
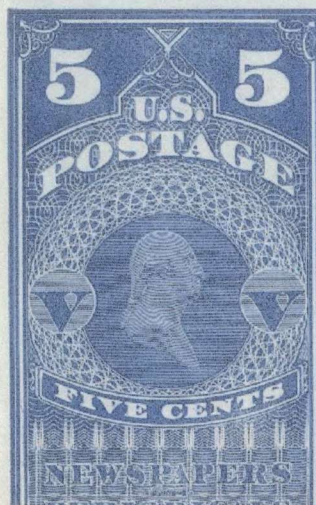
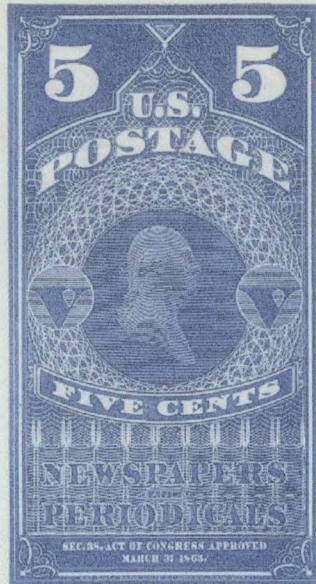


Plain Border Issued Stamp



1875 Continental Special Printing

- Noted, but not listed in Scotts
- Two sets of sheets known – one set has been broken up, stamps signed Costales
- Scott says perf sheets exist, never seen
- Probably made for centennial exposition in Philadelphia in 1876
- New plates – no colored border, no embossing

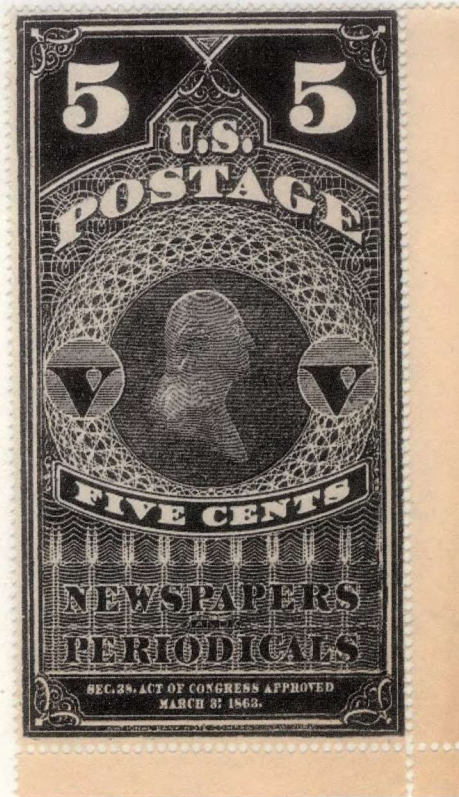


1881 American Bank
Note Company Special
Printing

- Soft porous paper
- No gum
- White border 5 cent only
- Very little information available on this type
- The block of 6 here is LKM



Fakes, Forgeries & Fantasies
Sometimes the color is a bit off
Like These...



General Characteristics of Fakes

- Usually imprint at bottom is unreadable
- Embossing usually absent
- Scrollwork around vignette poor to horrible
- Dimensions are incorrect (almost always)
- Perfs are ALWAYS wrong
- These are all philatelic fakes
- Attribution to usual suspects is unknown

Best Fake I've Found

- Sold in a George Sloan Auction as PR8
- Embossing is pretty good
- Inscription at bottom is excellent
- Scrollwork is excellent
- Correct dimensions
- Color is perfect
- PERFS ARE WRONG (11½)

